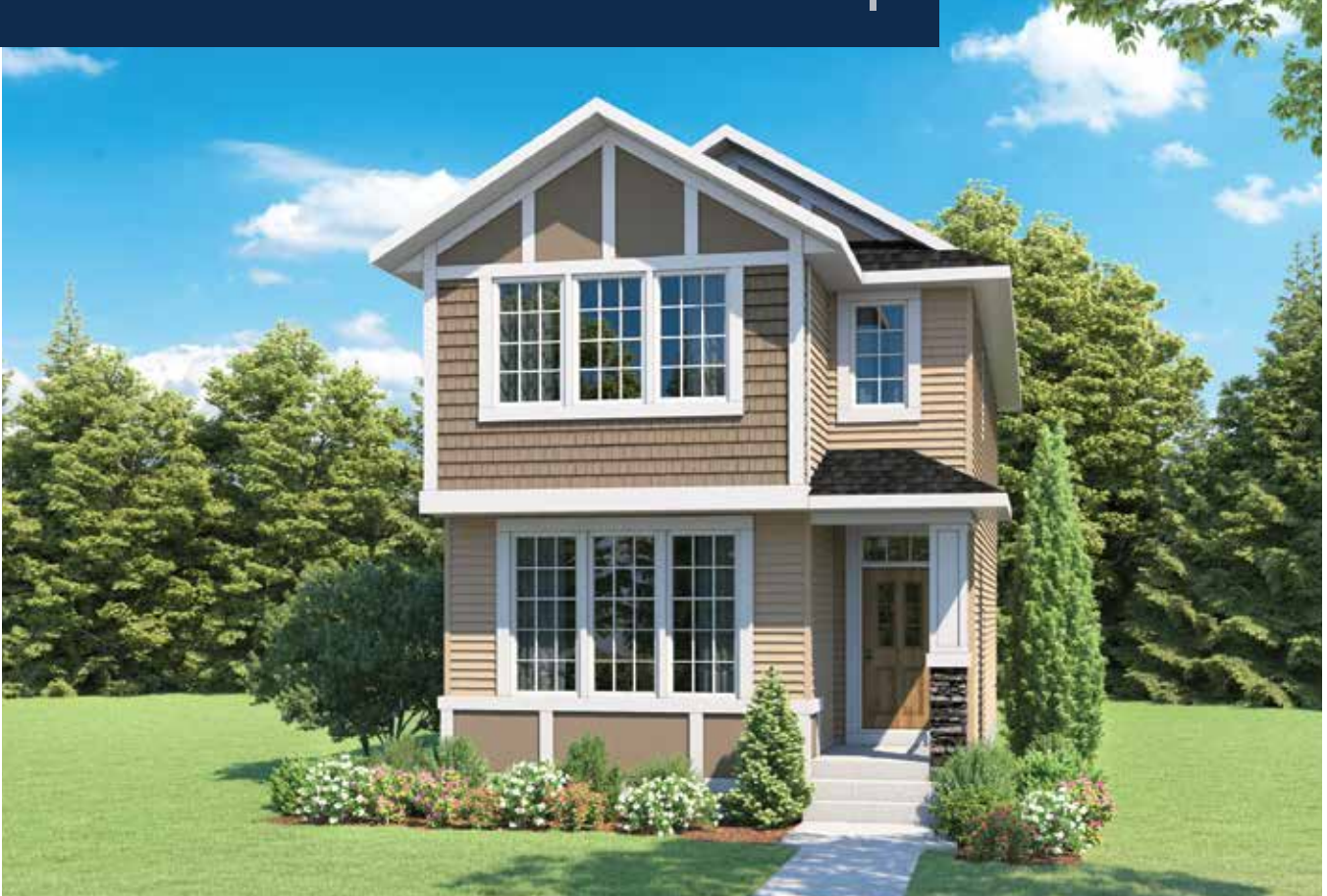


PEYTO

FLOORPLAN

CRAFTSMAN ELEVATION



FOURSQUARE ELEVATION



1709 SQ.FT.

3 BEDROOM
2.5 BATH
20' WIDTH

MODEL
15
25

DATE
10.10
2025

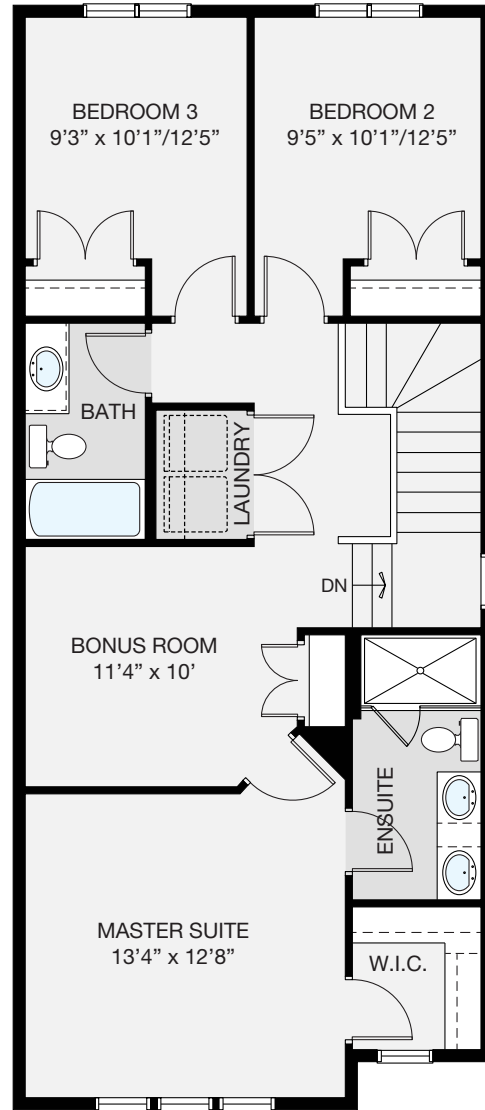
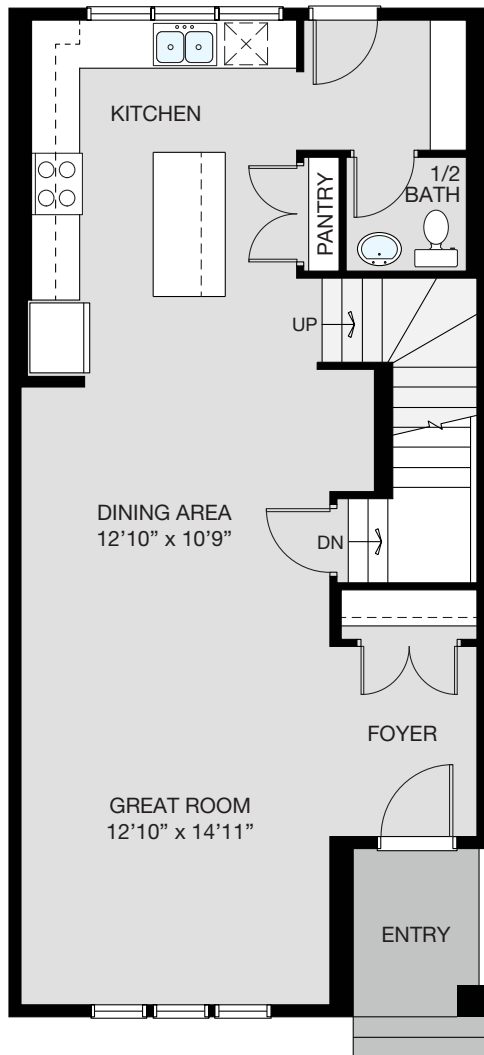


Renderings and photos are not exact representation of floor plan. Showhome photos shown.

PEYTO

- 9' main level ceiling height
- Open plan concept is ideal for entertaining
- Kitchen features ample counter space and large island with dual door pantry
- Convenient rear entrance with built-in bench

- Centrally located upper level laundry
- Bonus room is perfect for family time
- Master offers 4 piece ensuite and walk-in closet
- Secondary bedrooms are located farthest away from the master suite for noise reduction



3 BEDROOM
2.5 BATH

MAIN LEVEL: 800 SQ.FT.
UPPER LEVEL: 909 SQ.FT.



www.nuvistahomes.com
info@nuvistahomes.com

PEYTO MODEL 15-25 OCTOBER 10, 2025

*Based on one elevation, refer to blueprint for elevation specific floorplans. The design is published by NuVista Homes and is subject to change without notice. All rights reserved, including the rights of reproduction in whole or in part in any form. NuVista reserves the right to change specification and plan without notice, however, guarantees that change will be of greater value. Room dimensions are approximate.