

WOODSIDE



▲ The Colonial (B)

MODEL 17 - 21

www.nuvistahomes.com

Total: 1529 sq. ft.



- 3 bedrooms, 2.5 bathrooms
- 9' main floor ceiling height
- Kitchen offers a 7' long island with large window over sink area
- Spacious walk-in pantry offers tons of storage
- Open plan concept is great for entertaining
- Upper floor laundry in centrally located for convenience
- Master has 4 piece ensuite and a roomy walk-in closet
- Covered front porch is full width and great for relaxing on

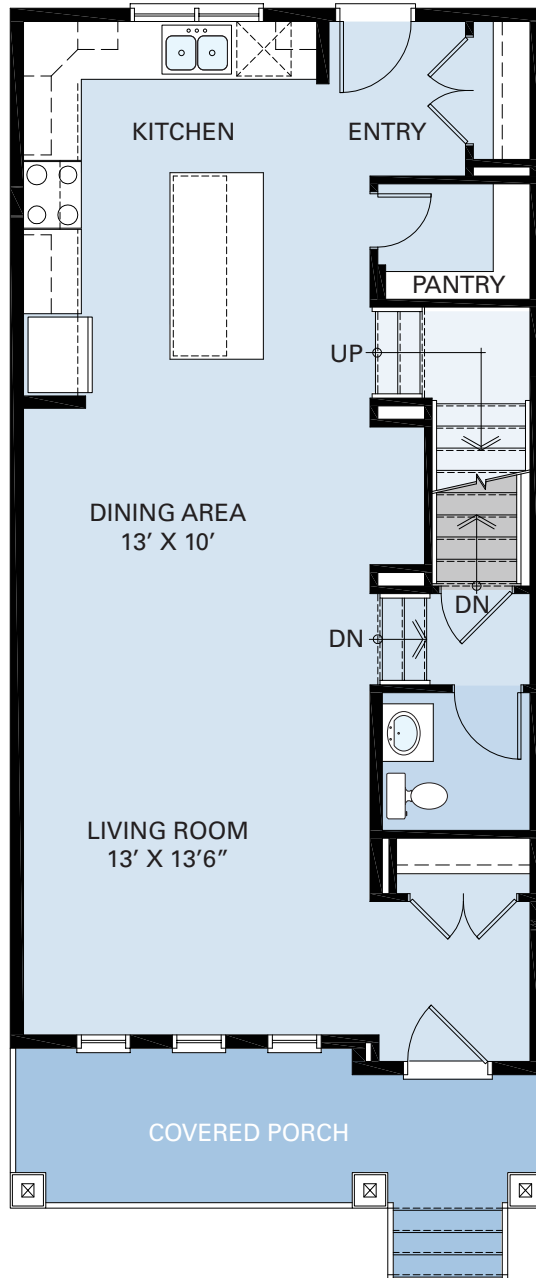
* Photos are not exact representations of plan

Jan 26, 2022

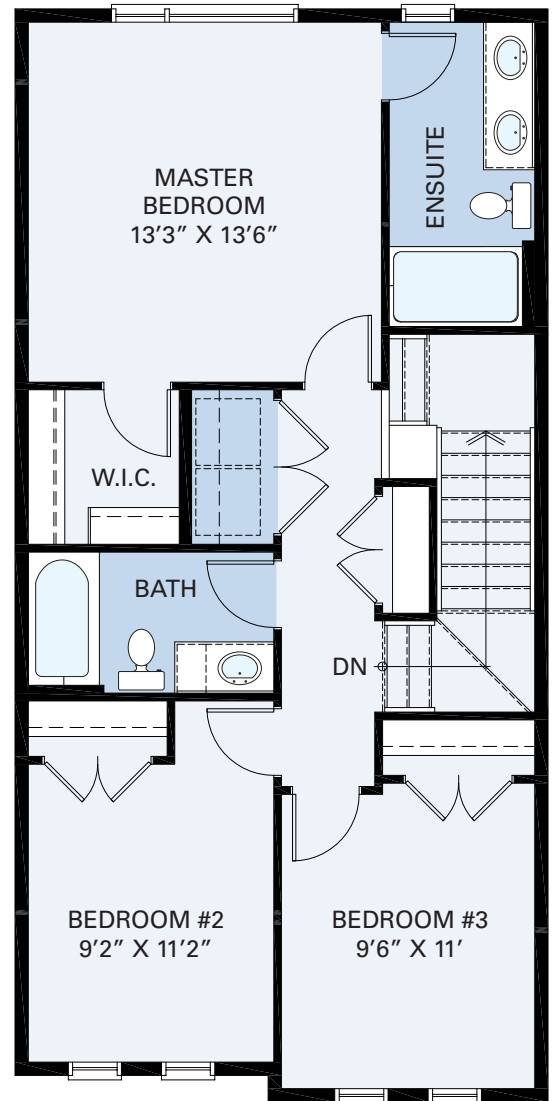
NuVista
HOMES
A QUALICO® Company

WIDTH: 20'
MODEL 17 - 21

WOODSIDE



9' MAIN LEVEL



UPPER LEVEL

MAIN LEVEL: 787 sq.ft. UPPER LEVEL: 742 sq.ft.
info@nuvistahomes.com • www.nuvistahomes.com

TOTAL: 1529 sq.ft.

*Based on one elevation, refer to blueprint for elevation specific floorplans. The design is published by NuVista Homes and is subject to change without notice. All rights reserved, including the rights of reproduction in whole or in part in any form. NuVista reserves the right to change specification and plan without notice, however, guarantees that change will be of greater value. Room dimensions are approximate.