

SABLEWOOD



▲ The Farmhouse (J)

MODEL 81 - 23

www.nuvistahomes.com

Total: 1775 sq. ft.

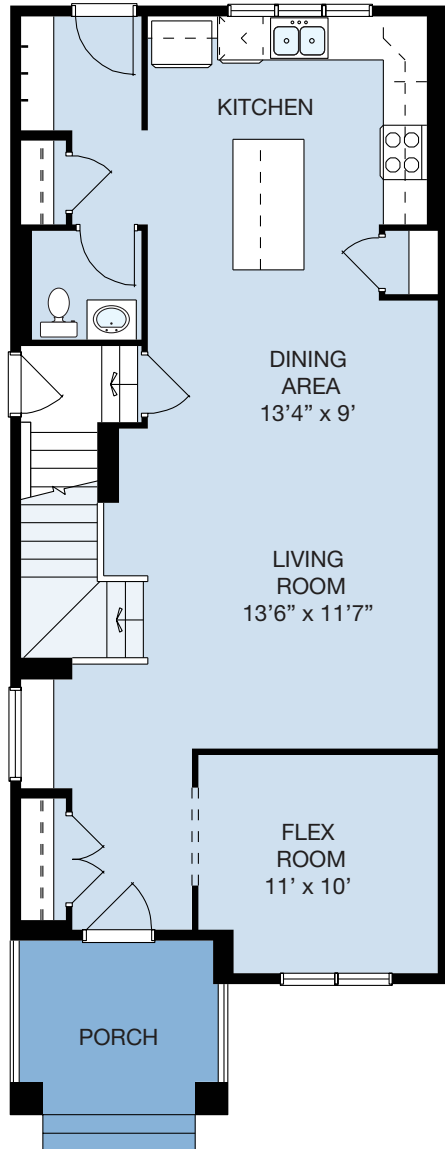


- 3 bedrooms, 2.5 bathrooms
- 9' main floor
- Side entrance
- Kitchen has an island and a large window above the sink that overlooks yard
- Front flex room makes for a great home business office
- There are built-in benches at the front and back doors
- upper floor loft area is adjacent to secondary bedrooms
- Convenient stacked upper floor laundry
- Master has four piece ensuite and huge walk-in closet

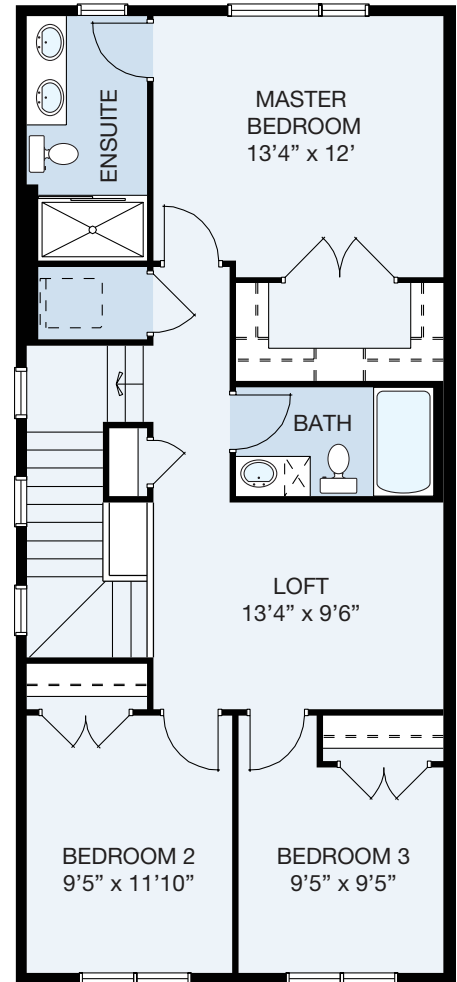


SABLEWOOD

WIDTH: 20'
MODEL 81 - 23



MAIN LEVEL



UPPER LEVEL

MAIN LEVEL: 881 sq.ft. UPPER LEVEL: 894 sq.ft. TOTAL: 1775 sq.ft.
info@nuvistahomes.com • www.nuvistahomes.com

*Based on one elevation, refer to blueprint for elevation specific floorplans. The design is published by NuVista Homes and is subject to change without notice. All rights reserved, including the rights of reproduction in whole or in part in any form. NuVista reserves the right to change specification and plan without notice, however, guarantees that change will be of greater value. Room dimensions are approximate.