

PIPER



The Foursquare (C)

MODEL 74-23

www.nuvistahomes.com

Total: 1602 sq. ft.



- 3 bedrooms, 2.5 bathrooms
- 9' main floor height with open plan concept
- Great side entrance!
- Basement has a "Suite Option" for extended family or adult kids
- Kitchen offers an island and a huge window over the sink area
- Gorgeous stone kitchen countertops
- Secondary bedrooms are located farthest away from master for noise reduction
- Master suite has a 5 piece ensuite and large walk-in closet
- Convenient upper floor laundry

Photos may not be exact representation of plan

JULY 2023



WIDTH: 20'
MODEL 74-23

PIPER

Other Elevations



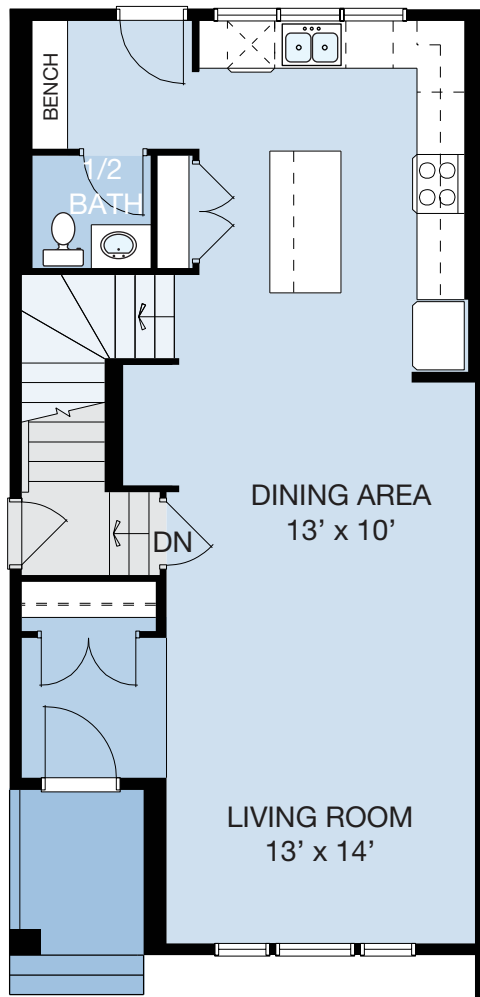
▲ The Craftsman (A)



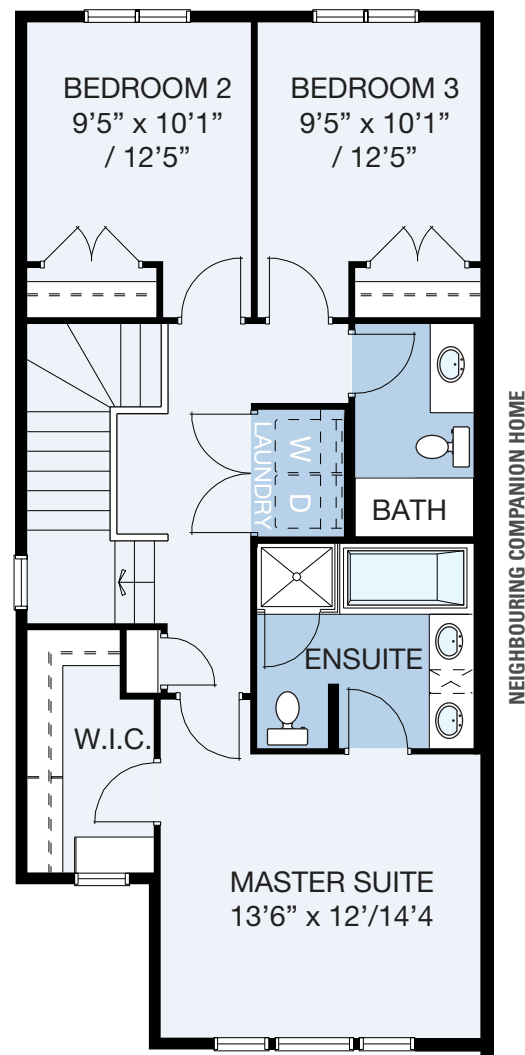
▲ The Foursquare (C)



▲ The Contemporary Craftsman (F)



MAIN LEVEL



UPPER LEVEL

MAIN LEVEL: 761 sq.ft. UPPER LEVEL: 841 sq.ft. TOTAL: 1602 sq.ft.
info@nuvistahomes.com • www.nuvistahomes.com