

# PIPER II



The Contemporary Foursquare (G)

MODEL 76-23

[www.nuvistahomes.com](http://www.nuvistahomes.com)

Total: 1699 sq. ft.



- 3 bedrooms, 2.5 bathrooms
- 9' main floor height with open plan concept
- Great side entrance!
- Basement has a "Suite Option" for extended family or adult kids
- Kitchen offers an island and a huge window over the sink area
- Gorgeous stone kitchen countertops
- Secondary bedrooms are located farthest away from master for noise reduction
- Master suite has a 3 piece ensuite and large walk-in closet
- Convenient upper floor laundry • Upper floor loft area

Photos may not be exact representation of plan

FEB 8, 2023



Other Elevations



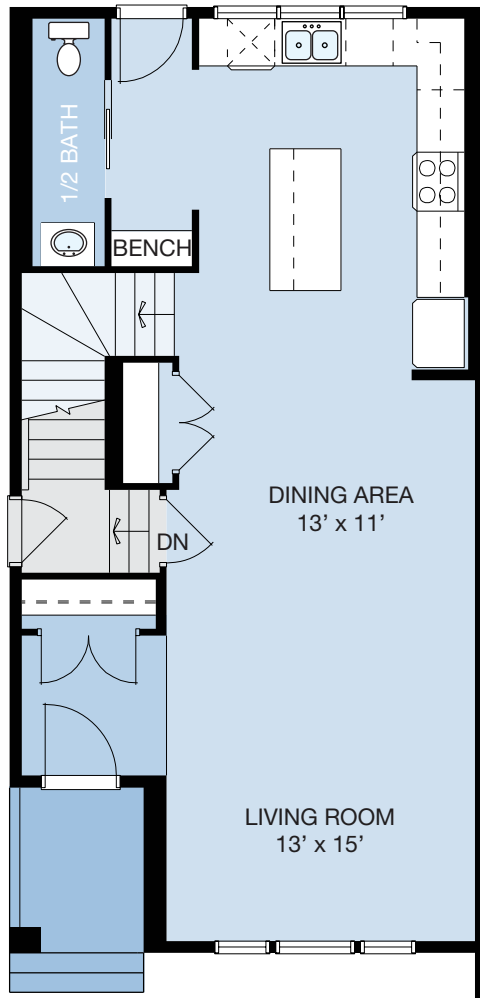
▲ The Craftsman (A)



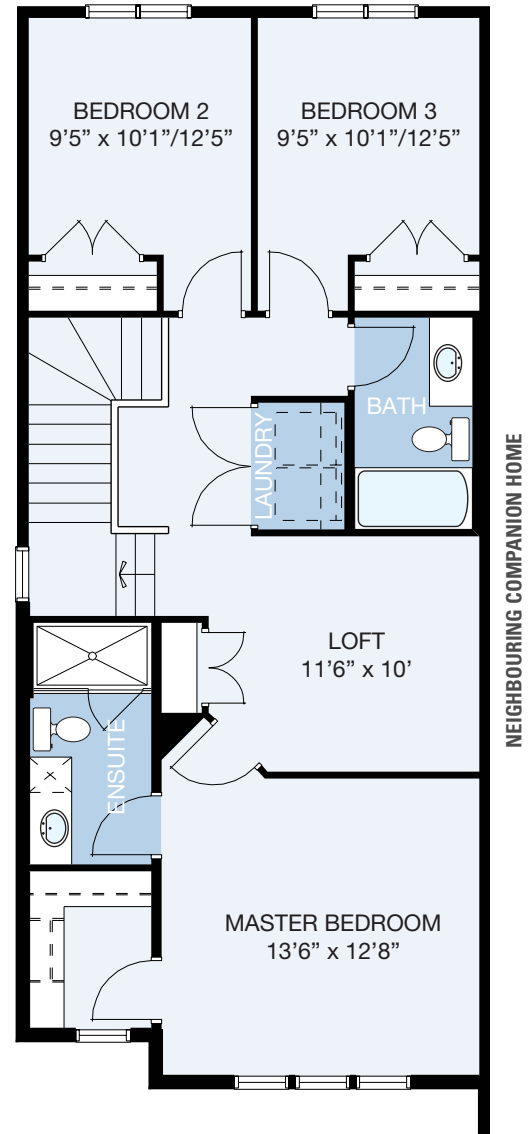
▲ The Foursquare (C)



▲ The Farmhouse (J)



MAIN LEVEL



UPPER LEVEL

MAIN LEVEL: 790 sq.ft. UPPER LEVEL: 909 sq.ft. TOTAL: 1699 sq.ft.

info@nuvistahomes.com • www.nuvistahomes.com

\*Based on one elevation, refer to blueprint for elevation specific floorplans. The design is published by NuVista Homes and is subject to change without notice. All rights reserved, including the rights of reproduction in whole or in part in any form. NuVista reserves the right to change specification and plan without notice, however, guarantees that change will be of greater value. Room dimensions are approximate.