

PINEVIEW II



▲ The Foursquare (C)

MODEL 42-21

www.nuvistahomes.com

Total: 2040 sq. ft.



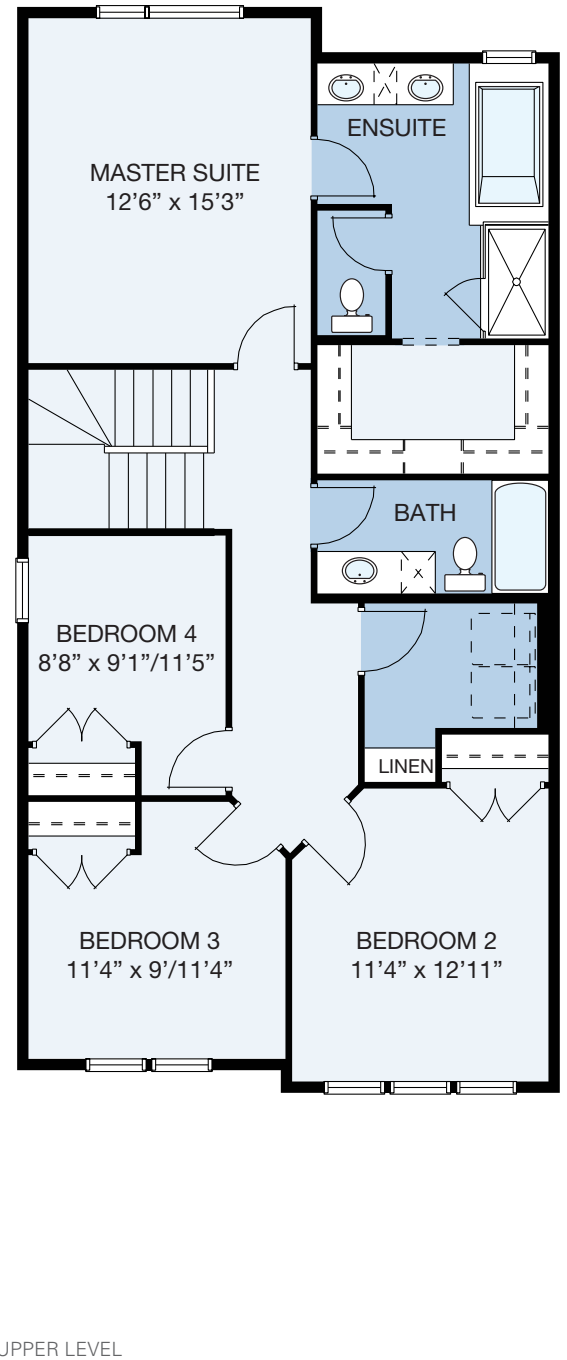
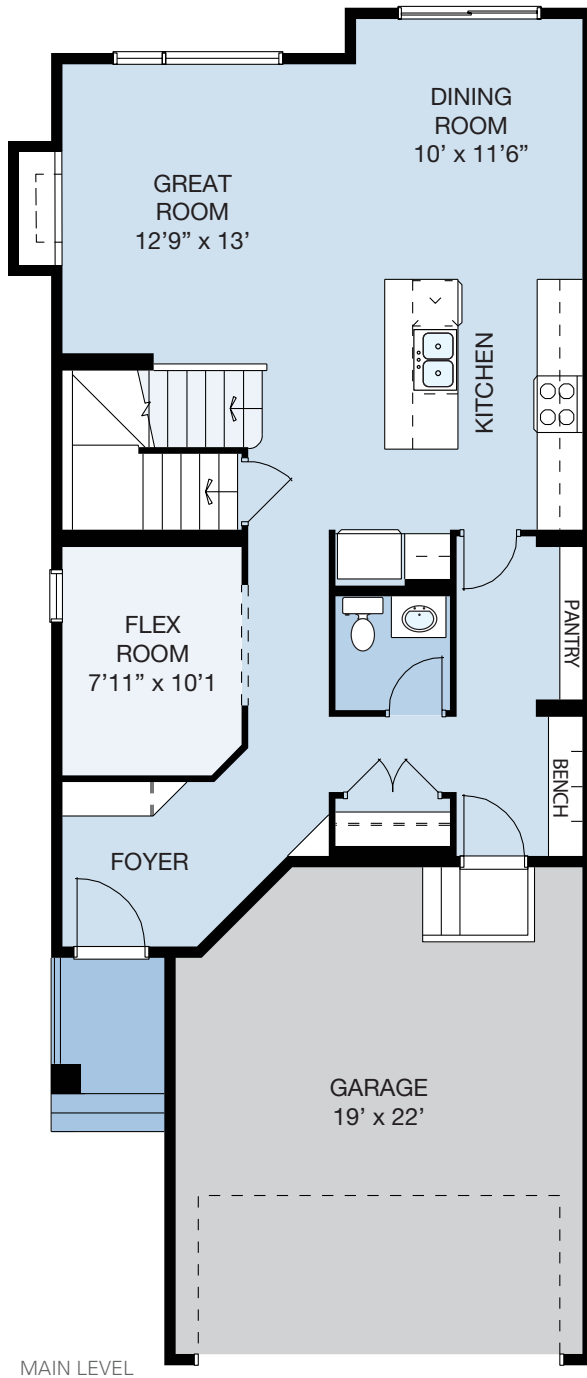
- 9' Main floor
- 4 bedrooms, 2.5 bathrooms
- Kitchen has a flush eating bar and walk-through pantry
- Mudroom has bench and hooks
- Main floor flex is located off of foyer
- Convenient upper floor laundry has built-in shelving
- 5 piece master ensuite has separate water closet and shower
- Master has large walk-in closet

OCT 8, 2021

NuVista
HOMES
A QUALICO® Company

PINEVIEW II

WIDTH: 24'
MODEL 42-21



MAIN LEVEL: 921 sq.ft. UPPER LEVEL: 1119 sq.ft. TOTAL: 2040 sq.ft.
info@nuvistahomes.com • www.nuvistahomes.com

*Based on one elevation, refer to blueprint for elevation specific floorplans. The design is published by NuVista Homes and is subject to change without notice. All rights reserved, including the rights of reproduction in whole or in part in any form. NuVista reserves the right to change specification and plan without notice, however, guarantees that change will be of greater value. Room dimensions are approximate.