

PENN



▲ The Foursquare (C)

MODEL 73-23

www.nuvistahomes.com

Total: 1602 sq. ft.



- 3 bedrooms, 2.5 bathrooms
- 9' main floor height with open plan concept • Great side entrance!
- Kitchen offers an island, double door wall pantry and adjacent bright nook
- Gorgeous stone kitchen countertops • Convenient upper floor laundry
- Basement has a "Suite Option" for extended family or adult kids
- Secondary bedrooms are located farthest away from the master suite for noise reduction
- Master suite has a 5 piece ensuite and large walk-in closet

JULY 2023

Photos may not be exactly as shown



Other Elevations



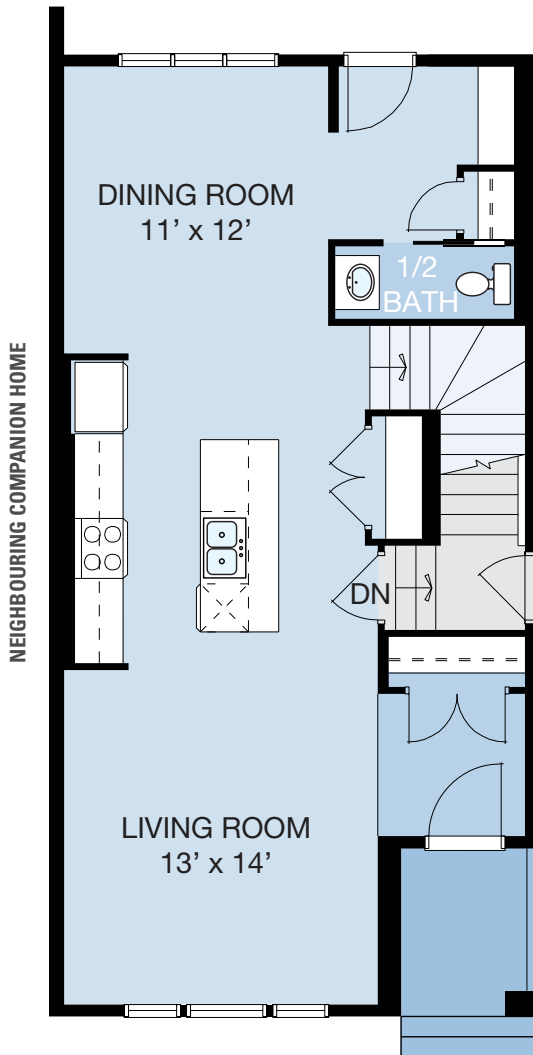
▲ The Craftsman (A)



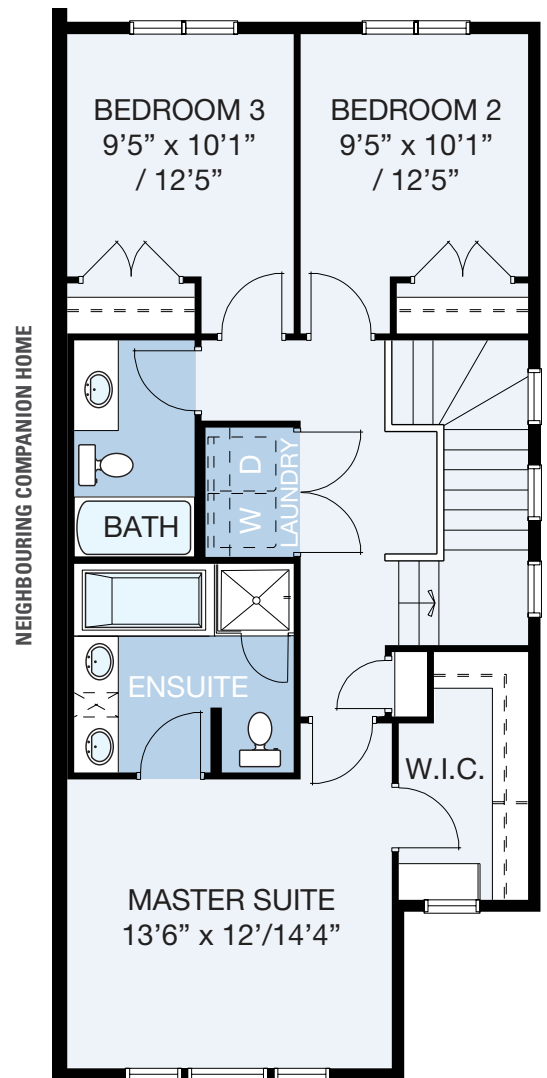
▲ The Foursquare (C)



▲ The Foursquare (C)



MAIN LEVEL



UPPER LEVEL

MAIN LEVEL: 761 sq.ft. UPPER LEVEL: 841 sq.ft. TOTAL: 1602 sq.ft.
 info@nuvistahomes.com • www.nuvistahomes.com

*Based on one elevation, refer to blueprint for elevation specific floorplans. The design is published by NuVista Homes and is subject to change without notice. All rights reserved, including the rights of reproduction in whole or in part in any form. NuVista reserves the right to change specification and plan without notice, however, guarantees that change will be of greater value. Room dimensions are approximate.