

# PARKVIEW



▲ The Farmhouse (J)

MODEL 36 - 22

[www.nuvistahomes.com](http://www.nuvistahomes.com)

Total: 2203 sq. ft.



- 3 bedrooms, 2.5 bathrooms
- 9' main floor
- Spacious kitchen with large island and walk-thru to pantry
- Main floor flex room can be converted as a bedroom
- Upper floor bonus room and laundry
- Mudroom has built-in bench with walk-thru to pantry
- Master has 5 piece ensuite and spacious walk-in closet with option to have walk-thru to laundry

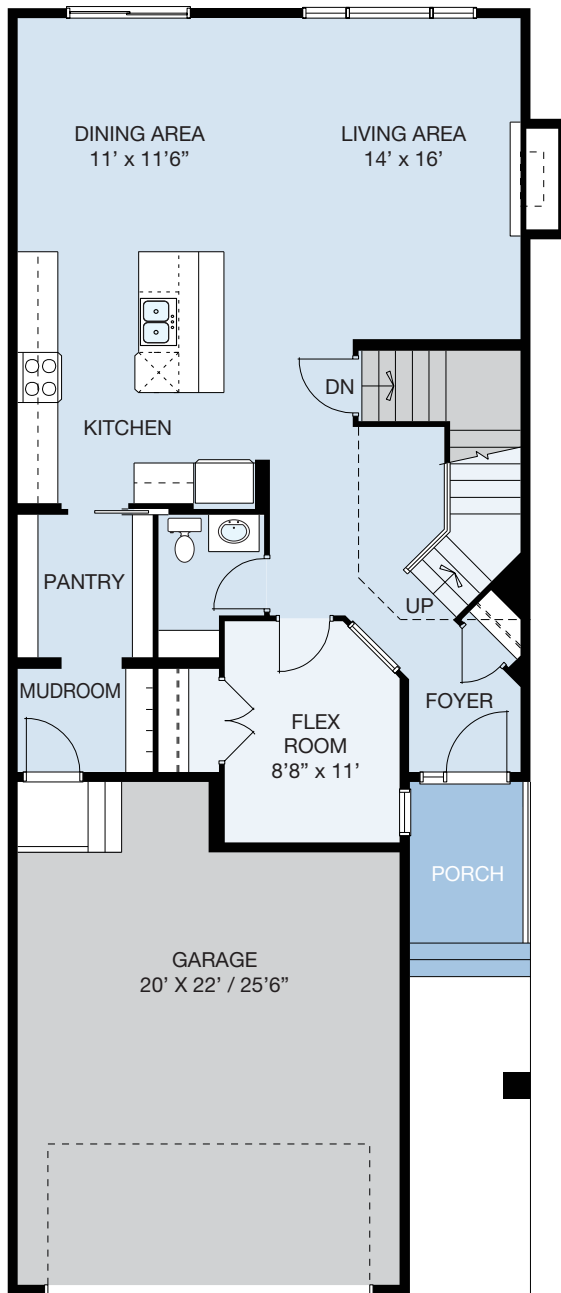


FEB 10, 2023

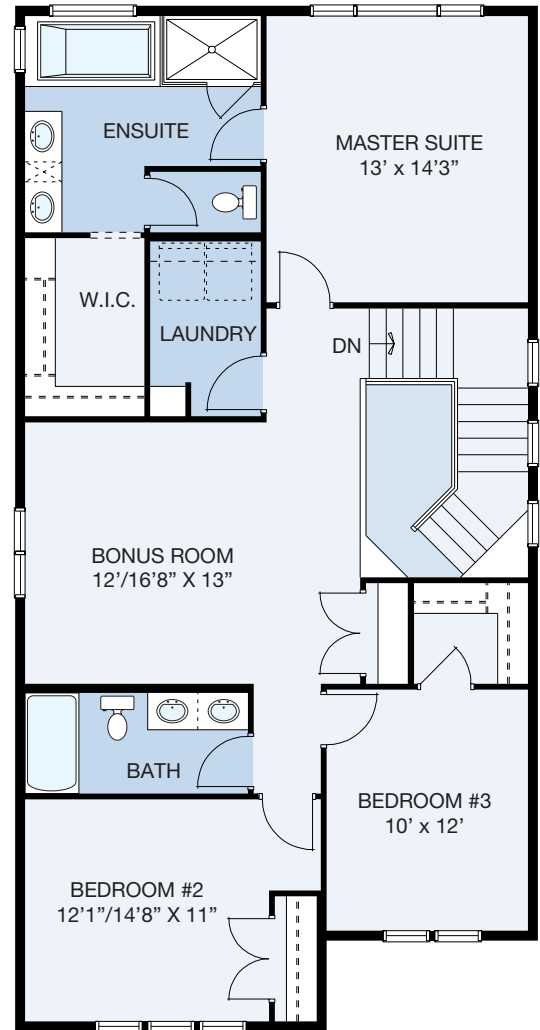
\* Photos are not exact representations of plan

WIDTH: 26'  
MODEL 36 - 22

# PARKVIEW



9' MAIN LEVEL



UPPER LEVEL

MAIN LEVEL: 1036 sq.ft. UPPER LEVEL: 1167 sq.ft. TOTAL: 2203 sq.ft.  
[info@nuvistahomes.com](mailto:info@nuvistahomes.com) • [www.nuvistahomes.com](http://www.nuvistahomes.com)

\*Based on one elevation, refer to blueprint for elevation specific floorplans. The design is published by NuVista Homes and is subject to change without notice. All rights reserved, including the rights of reproduction in whole or in part in any form. NuVista reserves the right to change specification and plan without notice, however, guarantees that change will be of greater value. Room dimensions are approximate.