

OAKRIDGE



▲ The Craftsman (A)

MODEL 51 - 23

www.nuvistahomes.com

Total: 3131 sq. ft.



- 5 bedrooms, 4 bathrooms
- 9' main floor
- Spacious kitchen with island and walk-thru pantry to mudroom
- Great room open to above
- Central main floor flex room
- Spacious upper floor laundry with built-in shelving
- Secondary bedrooms on upper floor have W.I.C. and a bathroom attached
- Master has 5 piece ensuite and huge walk-in closet

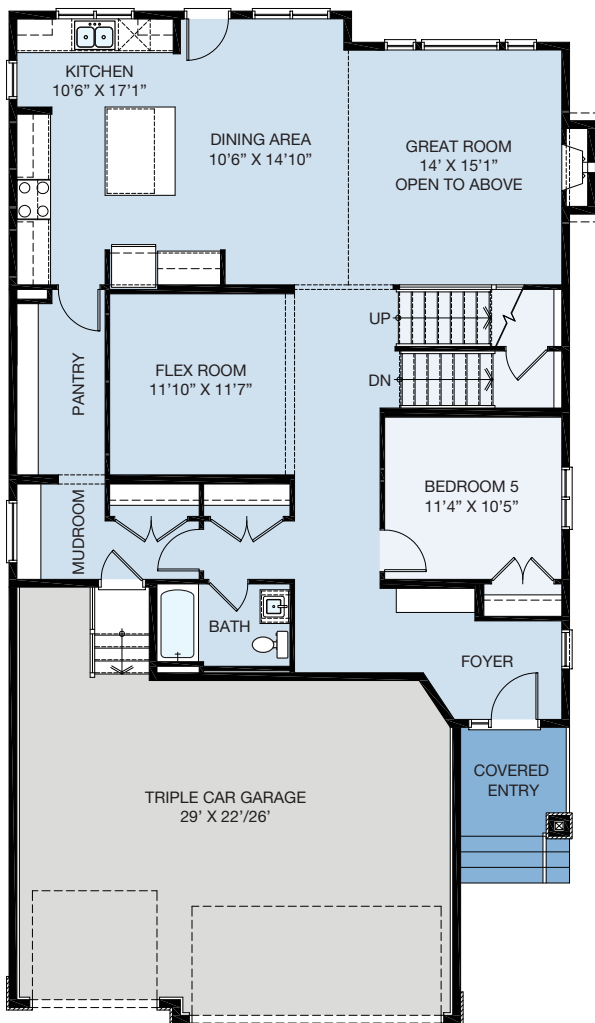
* Photos are not exact representations of plan

JAN 5, 2024

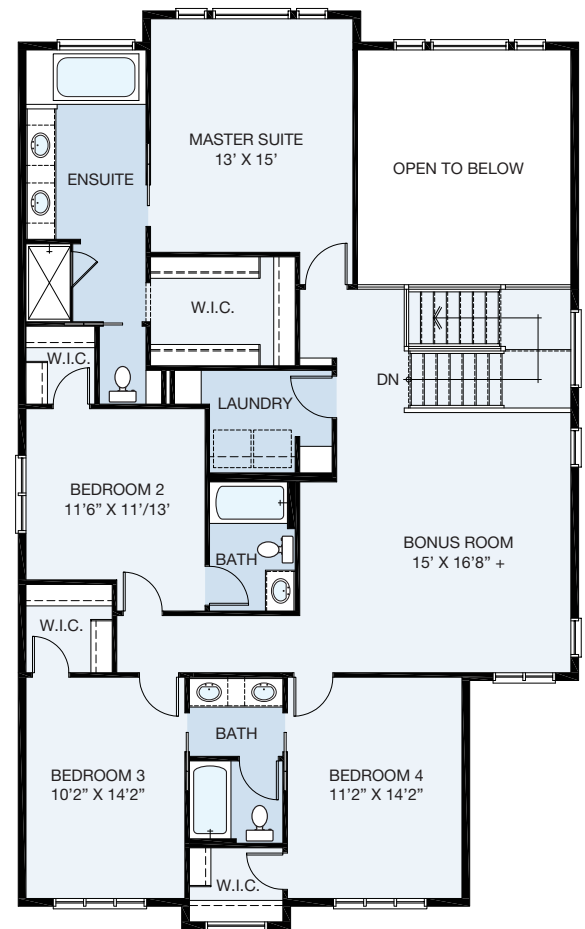


OAKRIDGE

WIDTH: 36'
MODEL 51 - 23



9' MAIN LEVEL



UPPER LEVEL

MAIN LEVEL: 1492 sq.ft. UPPER LEVEL: 1639 sq.ft. TOTAL: 3131 sq.ft.
info@nuvistahomes.com • www.nuvistahomes.com

*Based on one elevation, refer to blueprint for elevation specific floorplans. The design is published by NuVista Homes and is subject to change without notice. All rights reserved, including the rights of reproduction in whole or in part in any form. NuVista reserves the right to change specification and plan without notice, however, guarantees that change will be of greater value. Room dimensions are approximate.