

MEADOWVIEW



▲ The Craftsman (A)

MODEL 67 - 20

www.nuvistahomes.com

Total: 2440 sq. ft.



- Triple garage, 4 bedrooms, 2.5 bathrooms,
- 9' main floor
- Spacious kitchen with large island with large corner pantry
- Large mudroom offers great for extra storage and with a walk-in closet
- Spacious upper floor laundry with built-in wire shelves for storage
- Upper floor bonus room located by secondary bedrooms
- Spacious walk-in closets in bedrooms 2 & 3
- Master has 5 piece ensuite and huge walk-in closet

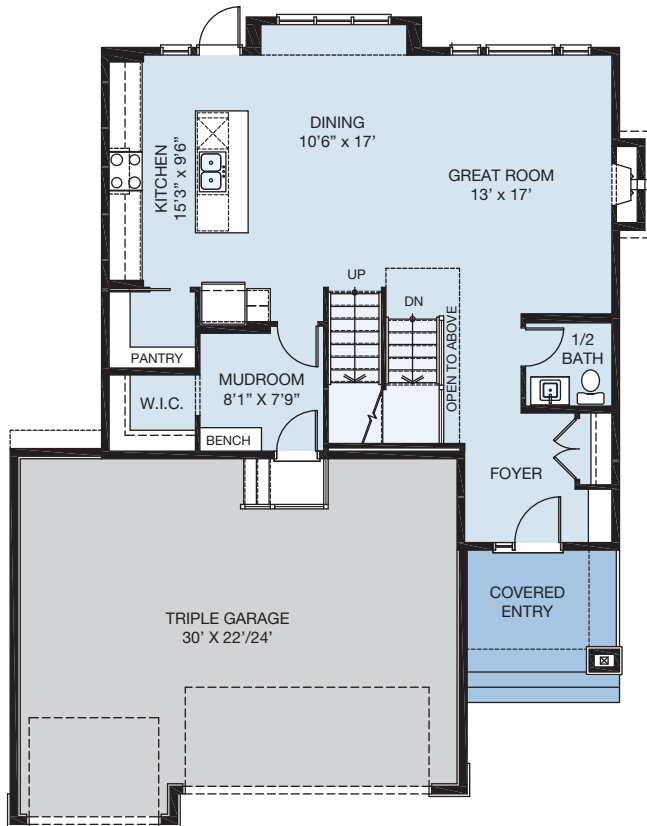
* Photos are not exact representations of plan



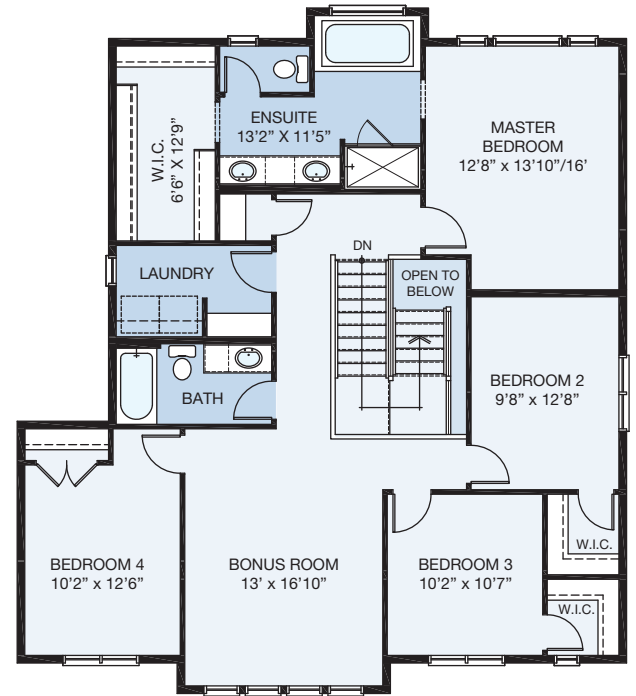
A QUALICO® Company

WIDTH: 36'
MODEL 67 - 20

MEADOWVIEW



9' MAIN LEVEL



UPPER LEVEL

MAIN LEVEL: 1005 sq.ft. UPPER LEVEL: 1435 sq.ft. TOTAL: 2440 sq.ft.
info@nuvistahomes.com • www.nuvistahomes.com

*Based on one elevation, refer to blueprint for elevation specific floorplans. The design is published by NuVista Homes and is subject to change without notice. All rights reserved, including the rights of reproduction in whole or in part in any form. NuVista reserves the right to change specification and plan without notice, however, guarantees that change will be of greater value. Room dimensions are approximate.