

MAYFIELD



▲ The Contemporary Foursquare (G)

MODEL 07-18

www.nuvistahomes.com

Total: 1716 sq. ft.



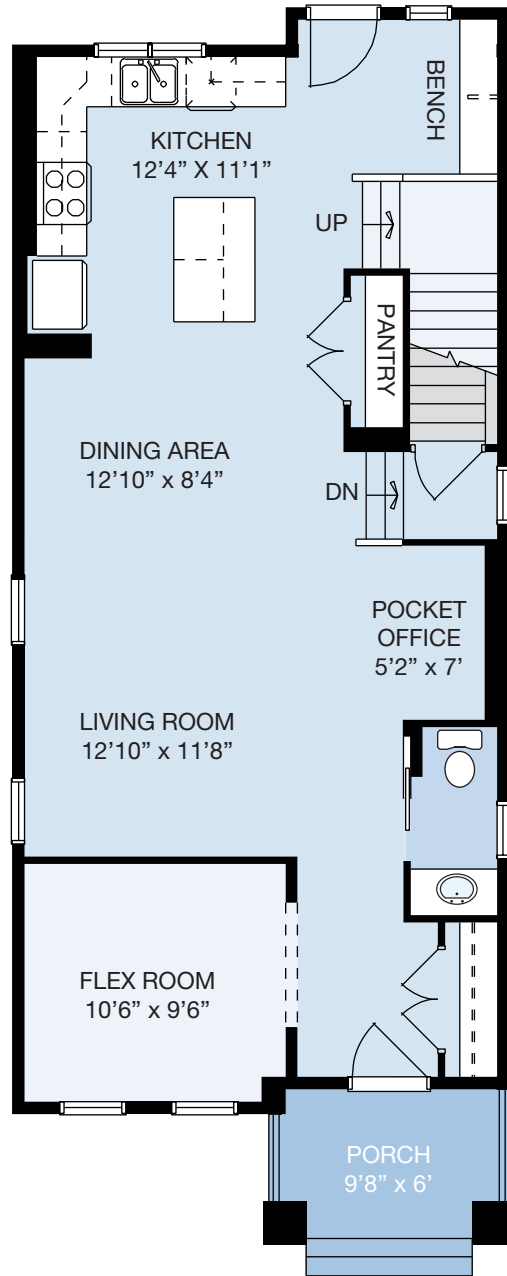
- 9' main floor
- Open kitchen / great room concept
- Open kitchen with large island and cabinet pantry
- Upper floor stackable laundry
- Separate garden access with bench
- Main floor flex room plus pocket office area
- Upper floor loft
- Masters has 3 piece ensuite plus walk-in closet

MAR 11, 2019

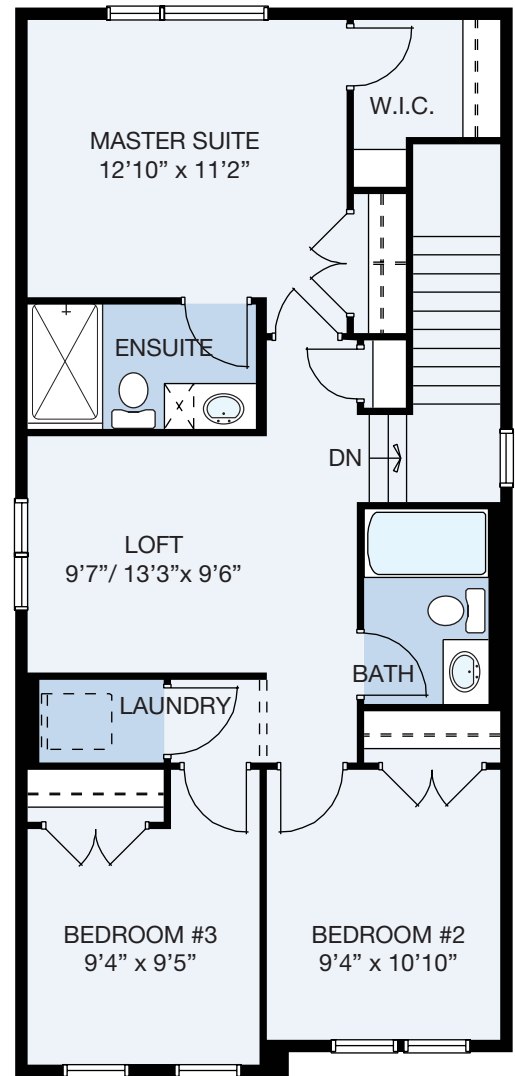
NuVista
HOMES
A QUALICO® Company

WIDTH: 20'
MODEL 07-18

MAYFIELD



MAIN LEVEL



UPPER LEVEL

MAIN LEVEL: 865 sq.ft. UPPER LEVEL: 851 sq.ft. TOTAL: 1716 sq.ft.
info@nuvistahomes.com • www.nuvistahomes.com

*Based on one elevation, refer to blueprint for elevation specific floorplans. The design is published by NuVista Homes and is subject to change without notice. All rights reserved, including the rights of reproduction in whole or in part in any form. NuVista reserves the right to change specification and plan without notice, however, guarantees that change will be of greater value. Room dimensions are approximate.