

KINGSTON



▲ The Craftsman (A)

MODEL 30 - 19

www.nuvistahomes.com

Total: 2199 sq. ft.



- 3 bedrooms, 2.5 bathrooms
- 9' main floor
- Spacious kitchen with large island with walk-thru pantry to mudroom
- Main floor flex room
- Spacious upper floor laundry has built-in wire shelves for storage
- Upper floor bonus room located next to secondary bedrooms
- Garage access has built-in bench with coat hooks
- Master has 5 piece ensuite and huge walk-in closet

Jan 22, 2020



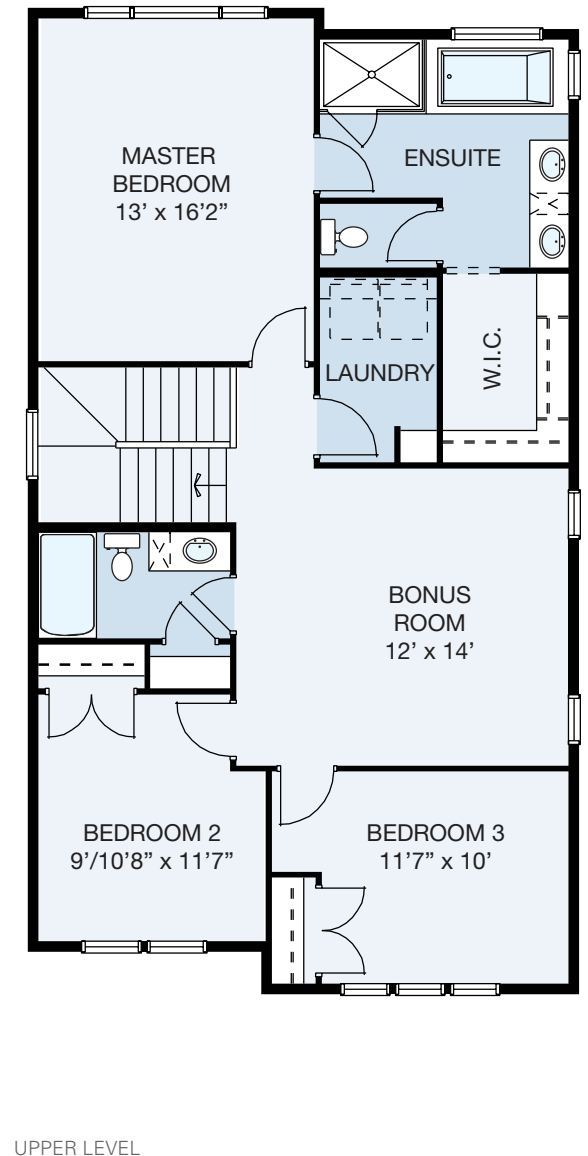
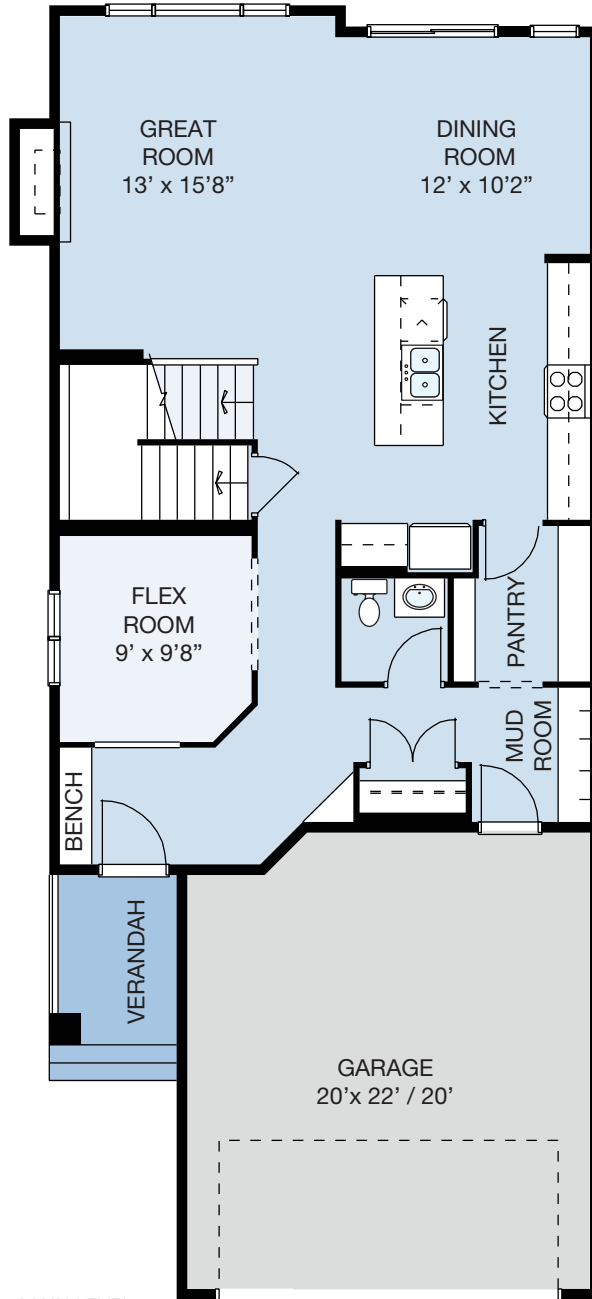
WIDTH: 26'
MODEL 30 - 19

KINGSTON

Other Elevations



▲ The Craftsman (A)



MAIN LEVEL: 1024 sq.ft. UPPER LEVEL: 1175 sq.ft. TOTAL: 2199 sq.ft.
info@nuvistahomes.com • www.nuvistahomes.com