

# ELLISTON



The Contemporary Craftsman ( F )

MODEL 48 - 19

[www.nuvistahomes.com](http://www.nuvistahomes.com)

Total: 2604 sq. ft.



- 4 bedrooms, 4 bathrooms
- 9' main floor
- Spacious kitchen with island plus walk-thru pantry to mudroom
- Main floor flex room
- Spacious upper floor laundry has built-in wire shelves for storage
- Upper floor bonus room
- Second master or mother in law suite
- Master has 5 piece ensuite and huge walk-in closet

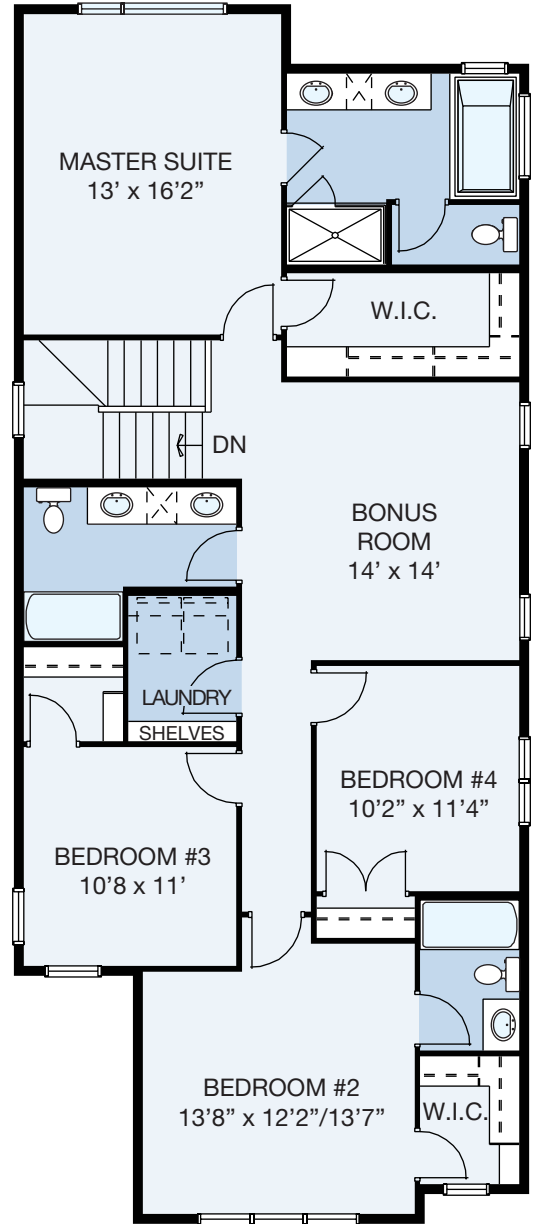
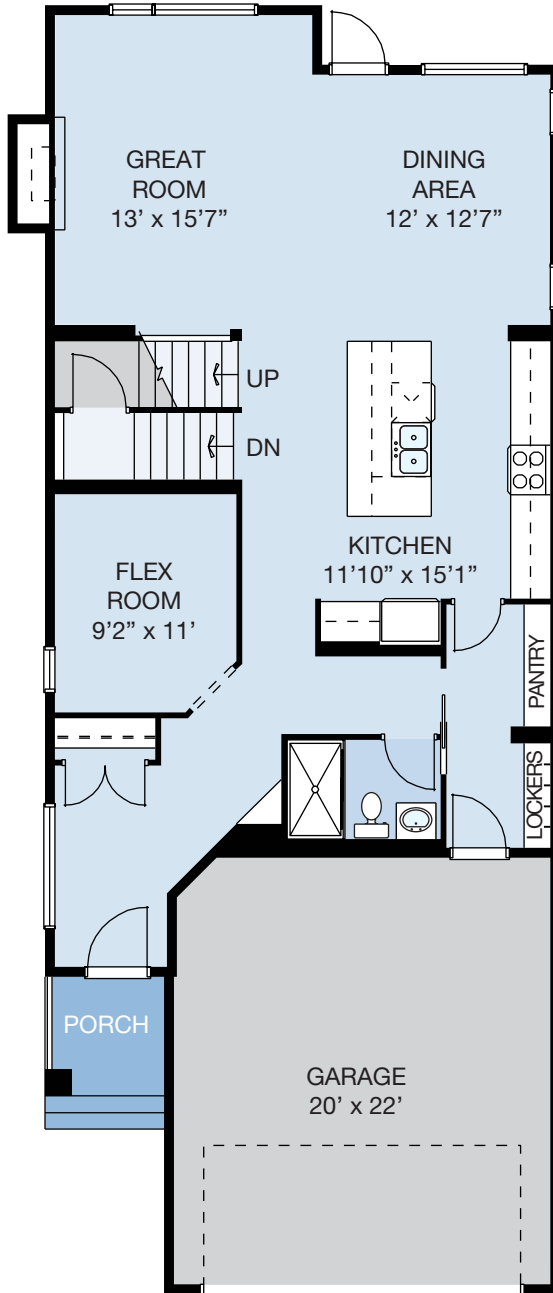
SEPT 3, 2019

\* Photos are not exact representations of plan

**NuVista**  
HOMES  
A QUALICO® Company

WIDTH: 26'  
MODEL 48 - 19

# ELLISTON



MAIN LEVEL

UPPER LEVEL

MAIN LEVEL: 1124 sq.ft. UPPER LEVEL: 1480 sq.ft. TOTAL: 2604 sq.ft.  
info@nuvistahomes.com • www.nuvistahomes.com

\*Based on one elevation, refer to blueprint for elevation specific floorplans. The design is published by NuVista Homes and is subject to change without notice. All rights reserved, including the rights of reproduction in whole or in part in any form. NuVista reserves the right to change specification and plan without notice, however, guarantees that change will be of greater value. Room dimensions are approximate.