

# EDENVIEW



▲ The Craftsman (A)

MODEL 65 - 22

[www.nuvistahomes.com](http://www.nuvistahomes.com)

Total: 1520 sq. ft.



- 9' main floor has 2 bedrooms and 2 full bathrooms
- Spacious kitchen is centered between the living and dining areas
- Main floor secondary bedroom can be used as a flex room
- Optional lower level offers 2 more bedrooms, full bath and recreation area
- Garage access at the back of the home with built-in bench
- Attractive elevation with front covered verandah
- Master has luxurious 5 piece ensuite with access to laundry
- Master has spacious walk-in closet

\*Rendering / Photos may not exact representations of plan



WIDTH: 30'  
MODEL 65 - 22

# EDENVIEW

## Other Elevations



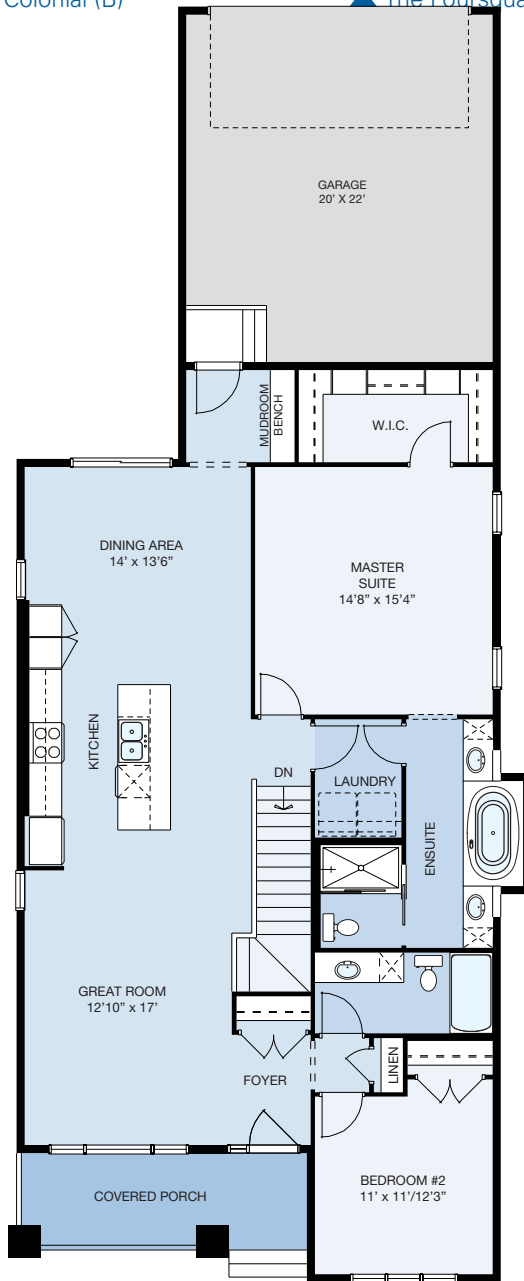
▲ The Colonial (B)



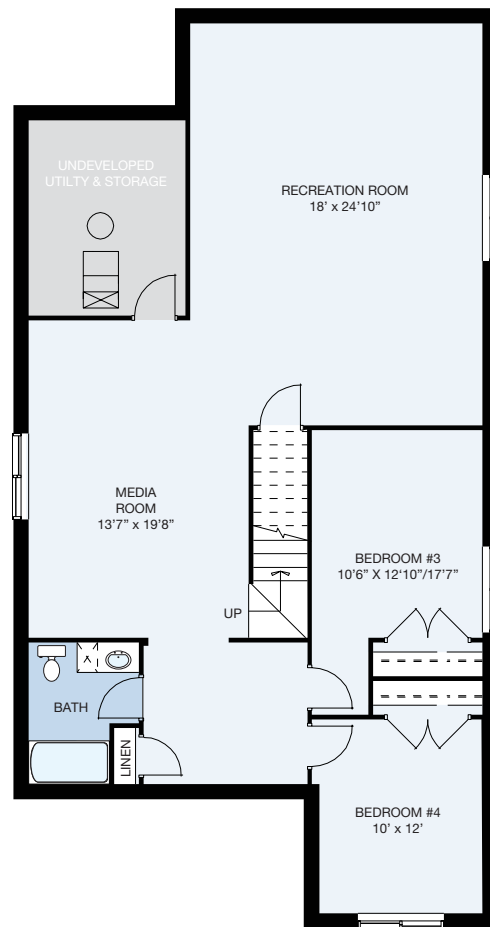
▲ The Foursquare (C)



▲ The Contemporary Craftsman (F)



9' MAIN LEVEL



OPTIONAL LOWER LEVEL DEVELOPMENT

MAIN LEVEL: 1520 sq.ft. OPTIONAL LOWER LEVEL: 1316 sq.ft. TOTAL: 1520 sq.ft.

info@nuvistahomes.com • www.nuvistahomes.com If lower level is developed, the total living space is 2836 sq.ft.

\*Based on one elevation, refer to blueprint for elevation specific floorplans. The design is published by NuVista Homes and is subject to change without notice. All rights reserved, including the rights of reproduction in whole or in part in any form. NuVista reserves the right to change specification and plan without notice, however, guarantees that change will be of greater value. Room dimensions are approximate.