

# CRESTVIEW II



▲ The Craftsman (A)

MODEL 47 - 22

[www.nuvistahomes.com](http://www.nuvistahomes.com)

Total: 2544 sq. ft.



- 4 bedrooms, 2.5 bathrooms
- 9' main floor has a huge great room area
- Spacious kitchen with large island with walk-thru pantry to mudroom
- Main floor flex room
- Spacious upper floor laundry with built-in wire shelves
- Upper floor bonus room is located adjacent to the master
- Garage access with a custom built-in bench and coat hooks
- Master has 5 piece ensuite and huge walk-in closet

\* Rendering and photos are not exact representations of plan



WIDTH: 36'  
MODEL 47 - 22

CRESTVIEW II

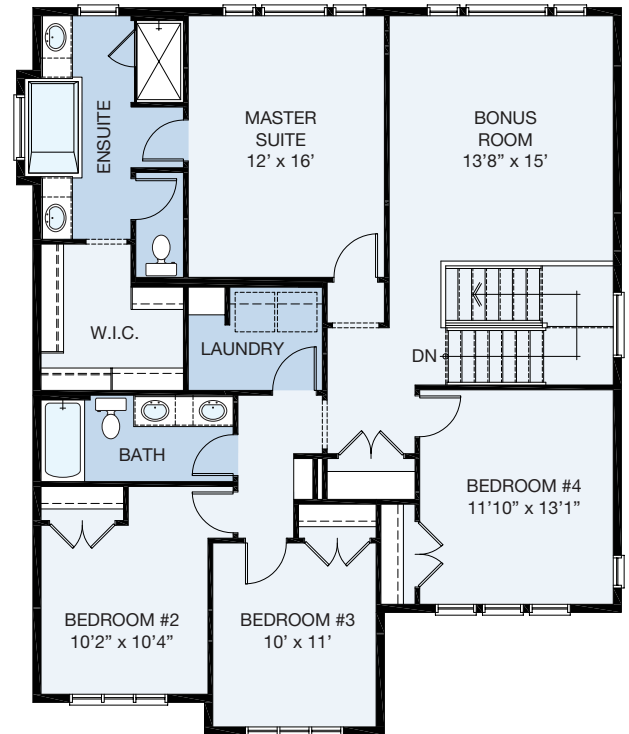
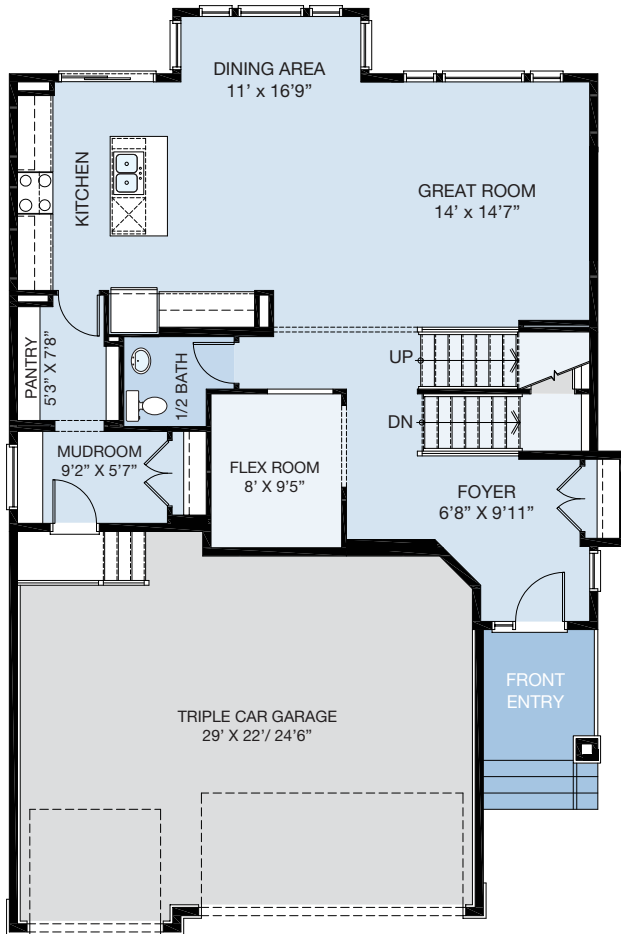
Other Elevations



▲ The Foursquare (C)



▲ The Farmhouse (K)



9' MAIN LEVEL

UPPER LEVEL

MAIN LEVEL: 1140 sq.ft. UPPER LEVEL: 1404 sq.ft. TOTAL: 2544 sq.ft.

info@nuvistahomes.com • www.nuvistahomes.com

\*Based on one elevation, refer to blueprint for elevation specific floorplans. The design is published by NuVista Homes and is subject to change without notice. All rights reserved, including the rights of reproduction in whole or in part in any form. NuVista reserves the right to change specification and plan without notice, however, guarantees that change will be of greater value. Room dimensions are approximate.