

# BRENTWOOD

FLOOR PLAN

FOURSQUARE



CRAFTSMAN



2428 SQ.FT.

3 BEDROOM  
2 1/2 BATH  
28' WIDTH

MODEL 54  
18 DATE 02.14  
2019

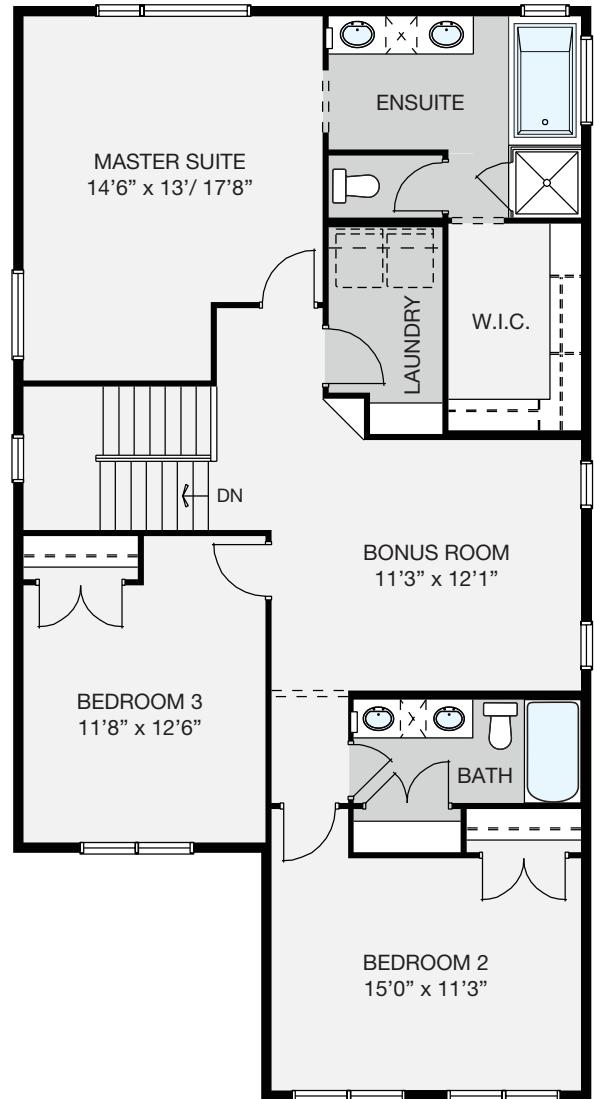
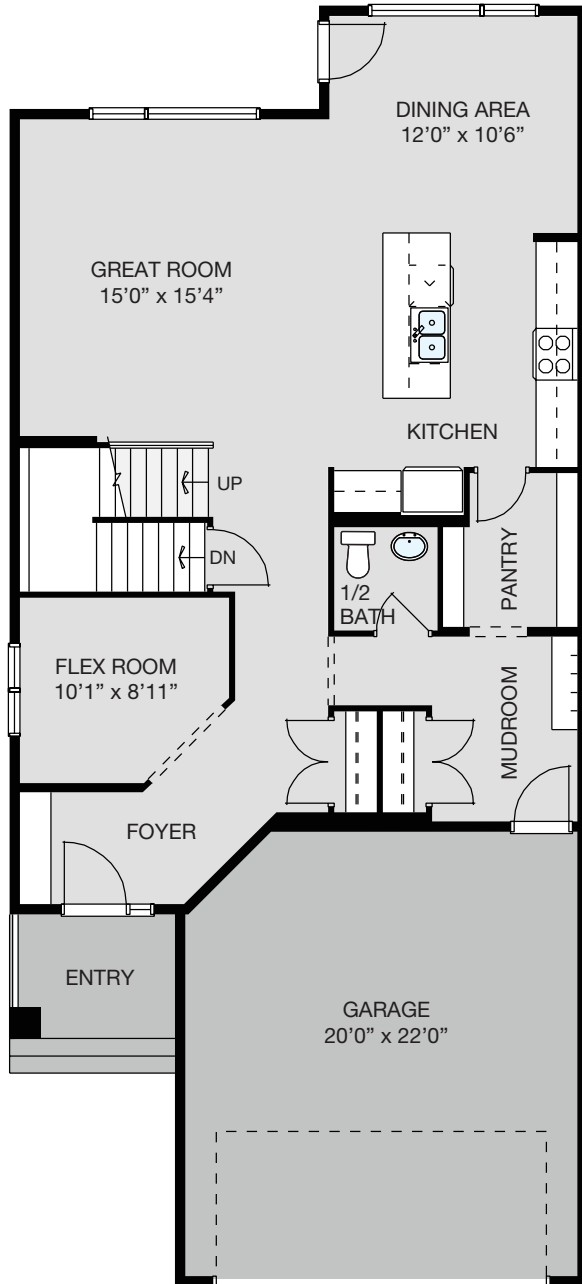


Renderings and photos are not exact representation of floor plan. Showhome photos shown.

# BRENTWOOD

- 9' main level ceiling height
- Spacious kitchen features large island with eating bar and walk-thru pantry leading to mudroom

- Main level flex room located off of foyer
- Centrally located bonus room
- Master suite has a 5 piece ensuite with large walk-in closet
- Convenient upper level laundry with built-in linen storage



3 BEDROOM  
2 1/2 BATH

MAIN LEVEL: 1088 SQ.FT.  
UPPER LEVEL: 1340 SQ.FT.



[www.nuvistahomes.com](http://www.nuvistahomes.com)  
[info@nuvistahomes.com](mailto:info@nuvistahomes.com)

BRENTWOOD MODEL 54-18 FEBRUARY 14, 2019

\*Based on one elevation, refer to blueprint for elevation specific floor plans. The design is published by NuVista Homes and is subject to change without notice. All rights reserved, including the rights of reproduction in whole or in part in any form. NuVista reserves the right to change specification and plan without notice, however, guarantees that change will be of greater value. Room dimensions are approximate.