

ASSINIBOINE

FLOORPLAN

FOUR SQUARE



2372 SQ.FT.

3 BEDROOM
3.5 BATH
26' WIDTH

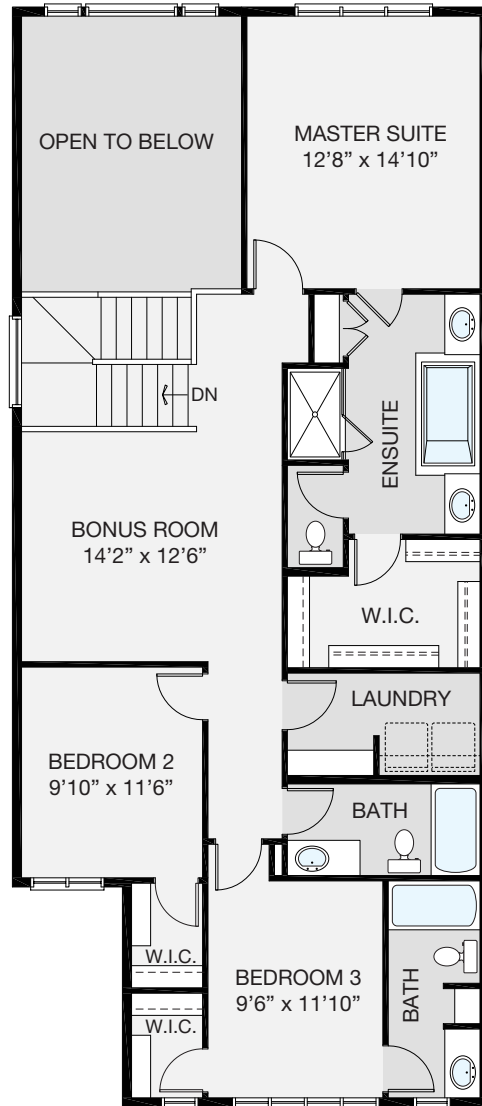
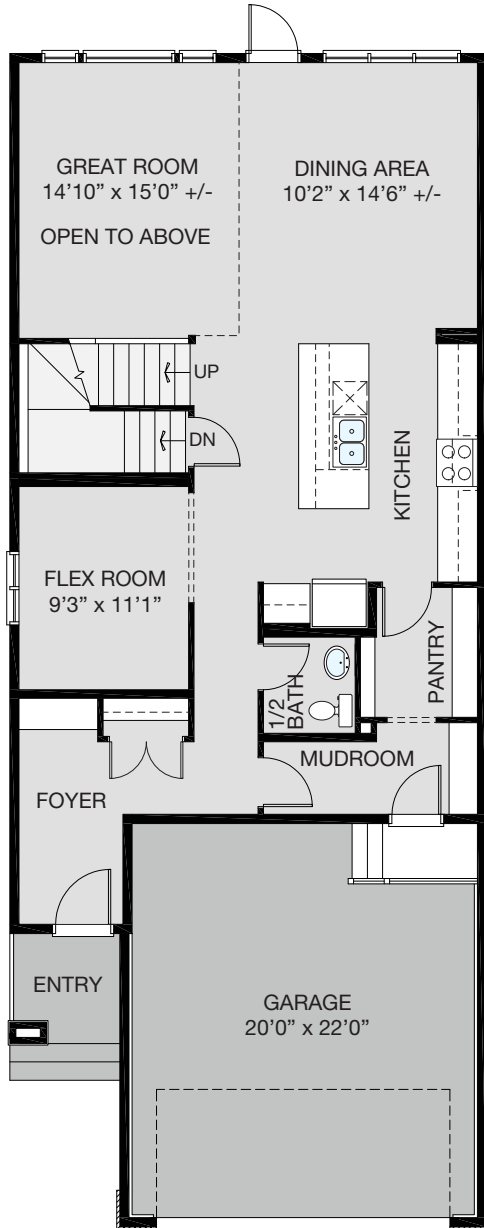
MODEL 26
24 DATE 01.05
2025



Renderings and photos are not exact representation of floor plan. Showhome photos shown.

ASSINIBOINE

- 9' main level ceiling height
- Open plan concept is ideal for entertaining
- Spacious kitchen features extended island
- Walk through pantry to mudroom
- Convenient upper level laundry with linen storage
- Huge upper floor bonus room
- Master offers 5 piece ensuite and enormous walk-in closet
- Bedroom 3 has full private bath and walk-in closet
- Secondary bedrooms are located farthest away from the master suite for noise reduction



3 BEDROOM
3.5 BATH

MAIN LEVEL: 1132 SQ.FT.
UPPER LEVEL: 1240 SQ.FT.



www.nuvistahomes.com
info@nuvistahomes.com

ASSINIBOINE MODEL 26-24 JANUARY 5, 2025

*Based on one elevation, refer to blueprint for elevation specific floorplans. The design is published by NuVista Homes and is subject to change without notice. All rights reserved, including the rights of reproduction in whole or in part in any form. NuVista reserves the right to change specification and plan without notice, however, guarantees that change will be of greater value. Room dimensions are approximate.