

# THE WESTBURY

564 Redstone Drive, NE  
Job # 25083



It's all about you.



Total: 1445 sq.ft.

"Redstone"

Contact:  
587.351.9662  
redstone@nuvistahomes.com

## Features:

- Contemporary foursquare elevation - see plans
- 3 bedrooms, 2.5 bathrooms
- 9' foundation and main floor ceiling heights
- Side entrance
- Next generation white kitchen cabinets with 40 1/2 " upper cabinets
- Quartz kitchen countertops including island
- Rear mudroom has built-in bench
- Hardwood and tile flooring
- Smooth skin interior passage doors



Main Office: # 115, 5709 - 2nd St SE, Calgary, AB, T2H 2W4  
Main Office: (403) 212 - 6383 Fax: (403) 212 - 6382

[www.nuvistahomes.com](http://www.nuvistahomes.com)

Redstone - 508 & 512 Redstone Drive NE  
Showhome Phone: (587) 351-9662 Fax: (587) 351-9664

# WESTBURY

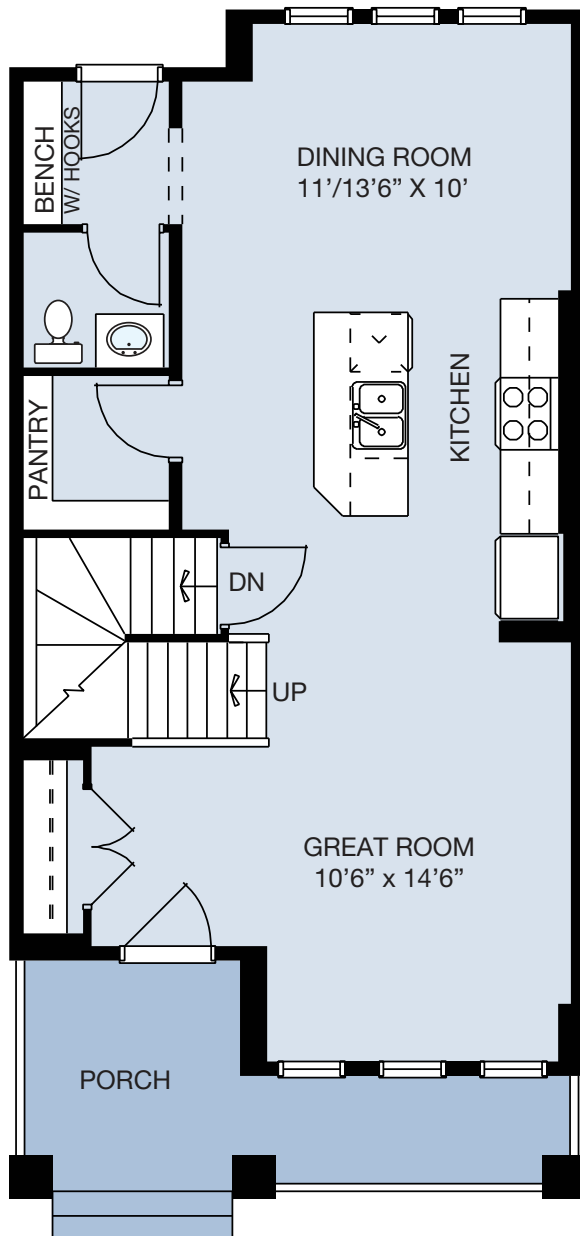
MODEL 03 - 17

MAIN LEVEL: 693 sq.ft.

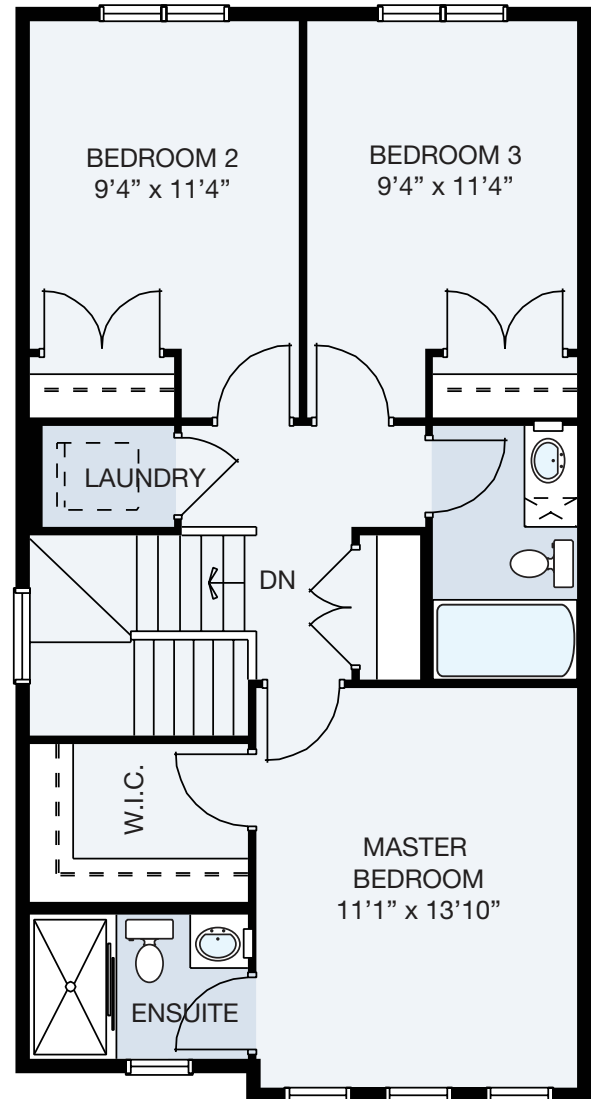
UPPER LEVEL: 752 sq.ft.

TOTAL: 1445 sq.ft.

WIDTH 20'



MAIN LEVEL



UPPER LEVEL