

# BAINES



MODEL 34 - 16

[www.nuvistahomes.com](http://www.nuvistahomes.com)

Total: 2512 sq. ft.



- 3 Bedrooms, 2.5 bathrooms
- 9' Main floor ceilings
- Spacious kitchen with walk in pantry and huge island
- Open concept kitchen, dining and great room
- Main floor flex room
- Upper floor laundry room with walk-thru access to master closet
- Built in lockers at garage entrance
- Central bonus room
- Master bedroom has 5 piece ensuite with free standing tub

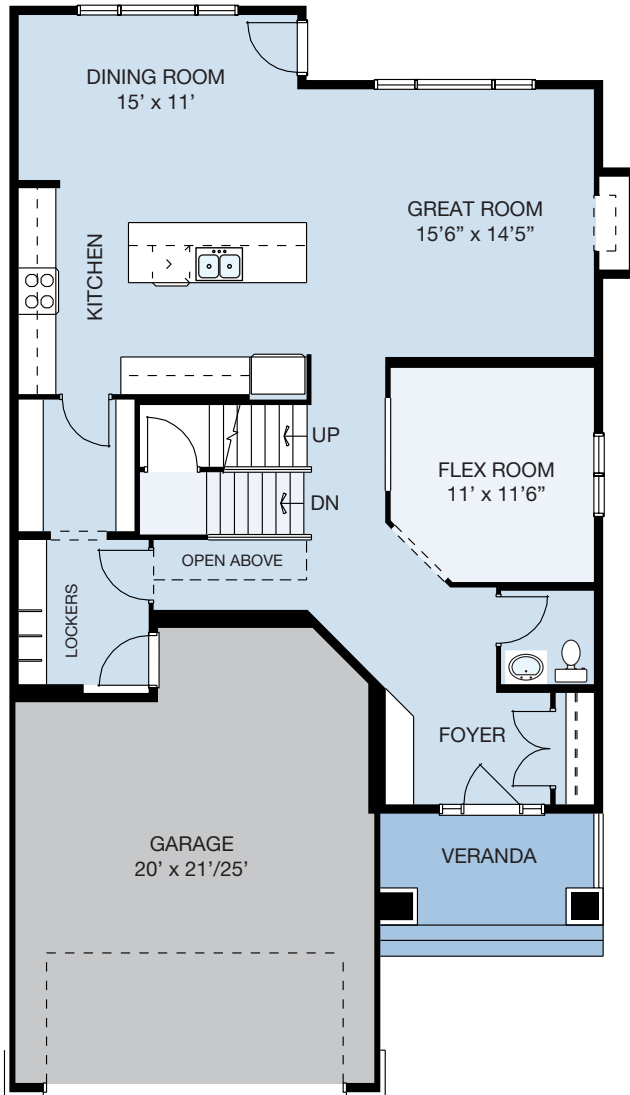
AUG 16, 2017

**NuVista**  
HOMES  
It's all about you.

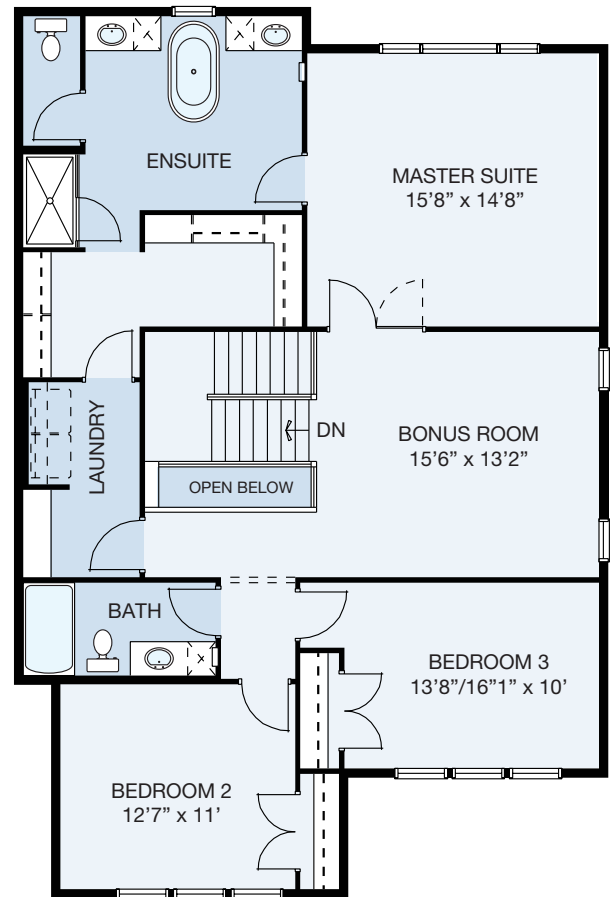
WIDTH: 32'  
MODEL 34 - 16

# BAINES

## Other Elevations



MAIN LEVEL



UPPER LEVEL

MAIN LEVEL: 1171 sq.ft. UPPER LEVEL: 1372 sq.ft. TOTAL: 2543 sq.ft.  
[info@nuvistahomes.com](mailto:info@nuvistahomes.com) • [www.nuvistahomes.com](http://www.nuvistahomes.com)

\*Based on one elevation, refer to blueprint for elevation specific floorplans. The design is published by NuVista Homes and is subject to change without notice. All rights reserved, including the rights of reproduction in whole or in part in any form. NuVista reserves the right to change specification and plan without notice, however, guarantees that change will be of greater value. Room dimensions are approximate.